

# TATES

020 7602 6020



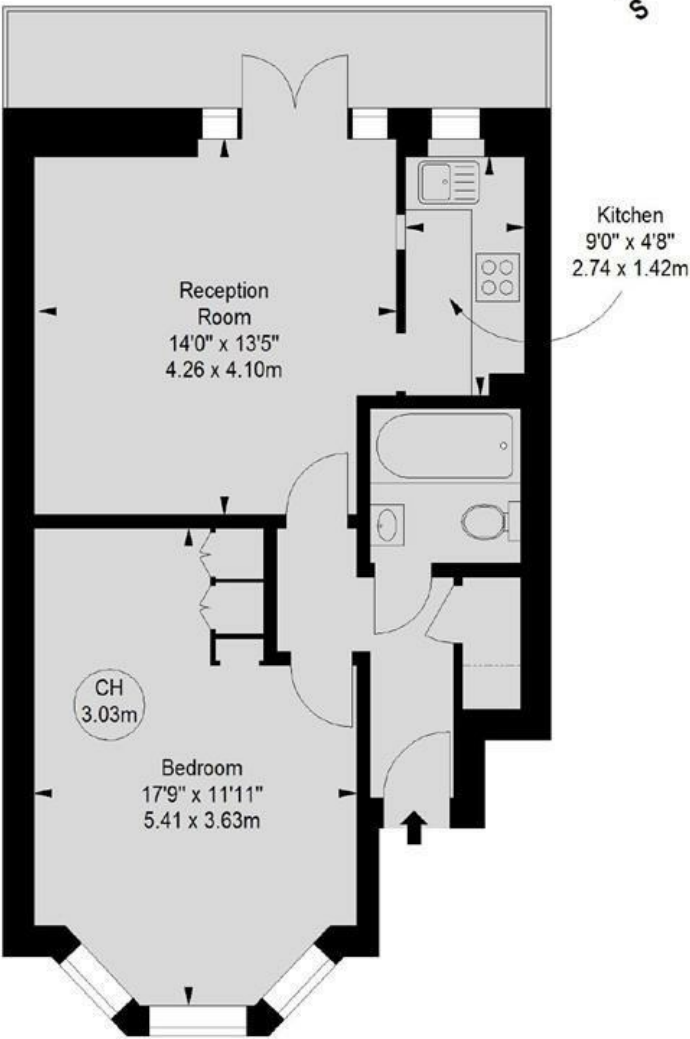
## Avonmore Road, London W14 8RS

**£495,000**

- One Double Bedroom Flat
- Lovely Modern Tiled Bathroom
- High Ceilings
- Moments From Kensington Olympia
- Fully Integrated Kitchen
- Balcony Large
- Close To District & Piccadilly line tubes
- Share Of Freehold

Avonmore Road, W14  
Approximate gross internal area  
505 sq ft / 46.9 sq m

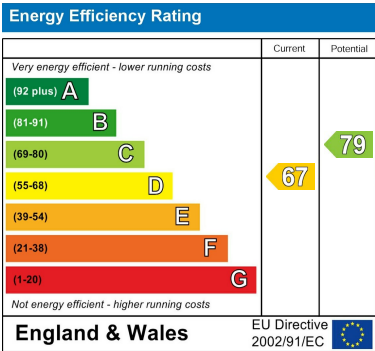
Key :  
CH - Ceiling Height



Raised Ground Floor

Illustration For Identification Purposes Only. Not To Scale  
\*Floorplan Drawn According To RICS Guidelines

Whilst these particulars are produced in good faith and are believed to be correct, no guarantee is given, nor any responsibility accepted, by Tates nor by any of its representatives, for their accuracy. The particulars do not constitute part of any offer or contract, and it is recommended that such things as measurements, condition, structure, services, appliances, fixtures and fittings and facilities are all independently assessed by the prospective purchaser or renter of the subject property prior to committing to any contract.



135 Hammersmith Road, West Kensington, London W14 0QL    mail@tatesestates.co.uk    tatesestates.co.uk

Tates (Agents) Ltd. Registered in England and Wales No. 02356337  
Registered Office: Imperial House, 8 Keane Street, London WC2B 4AS

